

# HYDRAULIKTJÄNST RIKTNINGSVENTILER MONOBLOCK

HYDRAULIKTJÄNST I FALKENBERG AB

[WWW.HYDRAULIKTJANST.SE](http://WWW.HYDRAULIKTJANST.SE)



## MONOBLOCK RIKTNINGSVENTILER Z50

ARTIKELNUMMER	Anslutningsportar A-B P-T	Flöde L / Min	Tryck Bar	Pris / st
Z50-A1-GKZ1-1 / 2 *	1 / 2 Bsp	50	P 250. T 50. A – B 300	1181,00
02Z50- A1A1-GKZ-1 / 2*	1 / 2 Bsp	50	P 250. T 50. A – B 300	1896,00
03Z50-A1A1A1-GKZ-1 / 2*	1 / 2 Bsp	50	P 250. T 50. A – B 300	2662,00
04Z50-A1A1A1A1-GKZ-1 / 2	1 / 2 Bsp	50	P 250. T 50. A – B 300	
05Z50-A1A1A1A1A1-GKZ-1 / 2	1 / 2 Bsp	50	P 250. T 50. A – B 300	
06Z50-A1A1A1A1A1A1-GKZ-1 / 2	1 / 2 Bsp	50	P 250. T 50. A – B 300	
07Z50-A1A1A1A1A1A1A1-GKZ-1 / 2	1 / 2 Bsp	50	P 250. T 50. A – B 300	

\*=Lagerförda artiklar



## MONOBLOCK RIKTNINGSVENTILER Z80

ARTIKELNUMMER	Anslutningsportar A-B P-T	Flöde L / Min	Tryck Bar	Pris / st
Z80-A1-GKZ1-1 / 2 *	1 / 2 Bsp	80	P 250. T 50. A – B 300	2702,00
02Z80- A1A1-GKZ-1 / 2*	1 / 2 Bsp	80	P 250. T 50. A – B 300	3960,00
03Z80-A1A1A1-GKZ-1 / 2*	1 / 2 Bsp	80	P 250. T 50. A – B 300	4847,00
04Z80-A1A1A1A1-GKZ-1 / 2	1 / 2 Bsp	80	P 250. T 50. A – B 300	
05Z80-A1A1A1A1A1-GKZ-1 / 2	1 / 2 Bsp	80	P 250. T 50. A – B 300	
06Z80-A1A1A1A1A1A1-GKZ-1 / 2	1 / 2 Bsp	80	P 250. T 50. A – B 300	

\*=Lagerförda artiklar





## MONOBLOCK RIKTNINGSVENTILER Z50

### RESERVDELAR

ARTIKELNUMMER	DENÄMNING	FUNKTION	Pris / st
SP-Z50 SPOL. B*	VENTILSLID B Z50	ENKELV. A	968,00
SP-Z50 SPOL. D*	VENTILSLID D Z50	A-B-T ÖPPNA P STÄNGT	605,00
SP-Z50 SPOL. K*	VENTILSLID K Z50	FLYTLÄGE A	726,00
SP-P40.1*	BAKSTYCKE 1-0-2	FJÄDER-0-FJÄDER	968,00
SP-P40.2*	BAKSTYCKE 1-0-2	FAST-0-FJÄDER	403,00
SP-P40.3*	BAKSTYCKE 1-0-2	FJÄDER-0-FAST	403,00
SP-P40.8*	BAKSTYCKE 1-0-2	FAST-FAST-FAST	363,00
SP-P40.16*	BAKSTYCKE 3-1-0-2	FAST-FJÄDER-0-FJÄDER	847,00
SP-Z80. SPOOL.B*	VENTILSLID B Z80	ENKELV. A	686,00
SP-Z80. SPOOL. D*	VENTILSLID D Z80	A-B-T ÖPPNA P STÄNGT	686,00
SP-P80.1*	BAKSTYCKE 1-0-2	FJÄDER-0-FJÄDER	220,00
SP-P80.2*	BAKSTYCKE 1-0-2	FAST-0-FJÄDER	403,00
SP-P80.3*	BAKSTYCKE 1-0-2	FJÄDER-0-FAST	403,00
SP-P80.8*	BAKSTYCKE 1-0-2	FAST-FAST-FAST	363,00
SP-P40/KZ*	SPAK + SPAKFÄSTE	TYP KZ	403,00
SP-P80/KZ*	SPAK + SPAKFÄSTE	TYP KZ	403,00
SP—CO.40*	SERIE NIPPEL	TYP C2	202,00
SP-CO.80*	SERIE NIPPEL	TYP C2	202,00

\*=Lagerförda artiklar



0 — Block with common check valve  
 2 — Standard çek valfli blok  
 Z50 — Number of spools  
 R — Sürgü sayısı  
 A — Directional control valve type  
 1 — Yön kontrol valfi tipi  
 1 — Inlet high pressure – right  
 A — Giriş yüksek basıncı - sağ  
 1 — First spool distribution type e  
 1 — İlk mil dağıtım tipi  
 1 — Spool control / detend and etc.  
 A — Sürgü kontrolü / dedant vs.  
 1 — Second spool distribution type  
 1 — İkinci sürgü dağıtım tipi  
 G — Spool control / detend and etc.  
 G — Mill kontrolü / dedant vs.  
 KZ1 — Ports / Threads  
 T — Girişler / Diş tipi  
 H — General operation feature  
 E — Genel çalışma özelliği  
 C2 — With "teton"  
 11 — "Meme başlı"  
 H — Operation feature – pneumatic  
 E — Prömatik kontrol özelliği  
 C2 — With electric switch  
 11 — Elektrik düğmesi  
 E — High pressure carry over  
 C2 — Yüksek basınç ayırıcı  
 11 — Connection ports in use  
 11 — Kullanılan bağlantı girişleri

**Table / Tablo 1**

Type / Tip	A	B	C	D	P1	P2	T1	T2
01Z50	60	80	85	60	+	-	+	-
02Z50	60	80	129	97	+	+	+	+
03Z50	60	80	164	132	+	+	+	+
04Z50	60	80	199	167	+	+	+	+
05Z50	60	80	234	202	+	+	+	+
06Z50	60	80	269	237	+	+	+	+
07Z50	60	80	304	272	+	+	+	+

**Table / Tablo 2**

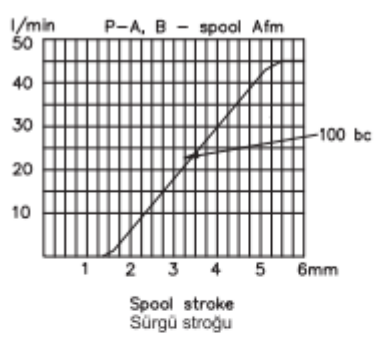
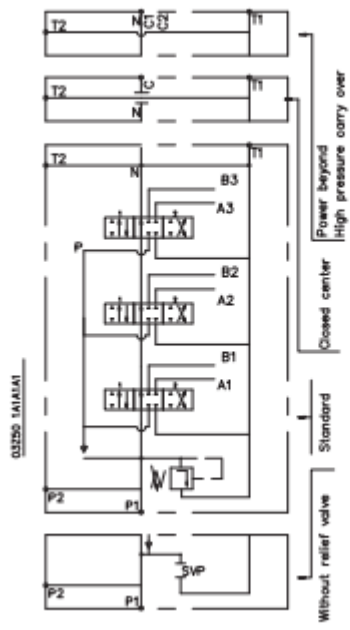
Spool control / Sürgü kontrolü	E	F
1, 4, 5, 6, 7, 8, 9, 10, 11	40	193
2, 3	72	225
16	+	+

**Table / Tablo 3**

Code / Kod	Spools / Sürgüler
01	1
02	2
03	3

**Table / Tablo 4**

Code / Kod	Way of distribution / Dağıtım yolu
1	Parallel / Paralel



Code / Kod	Spool type / Sürgü tipi
A	
B	
C	
D	
E	
F	
G	
H	
M	
N	
O	
P	
Q	
R	
S	
T	
*K	
**L	

\*Only for left hand configuration  
Sadece sol el için düzenlenmiş

\*\*Only for right hand configuration  
Sadece sağ el için düzenlenmiş

**Table / Tablo 6**

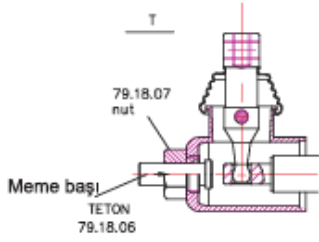
Code Kod	Spool control / Sürgü kontrolü
1	
2	
3	
4	
5	
6	
7	
8	
9	
10	
11	
15*	
16*	
12**	
13**	

**Table / Tablo 7**

Code / Kod	Incorporated microswitch / Mikroanahtar ile birleştirilmiş
E	<p>Microswitch type / Mikroanahtar tipi Omron - V 165 I C5</p>

**Table / Tablo 8**

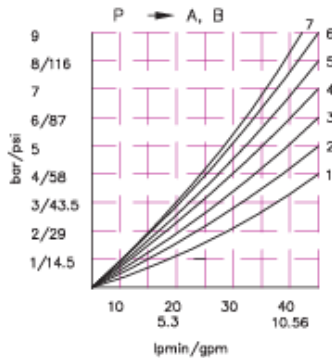
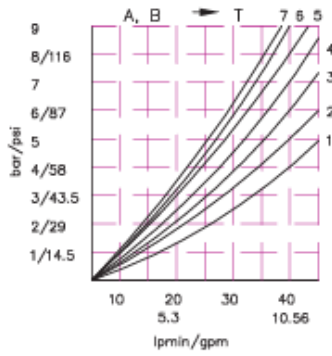
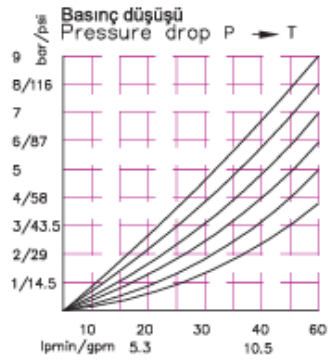
Code / Kod	Operation feature / Kontrol özelliği
P	<p>On-off pneumatic control / Açma-kapama pnömatik kontrol, 5-10 bar, ports NPTF 1/8-27</p>
H	<p>On-off hydraulic control / Açma-kapama hidrolik kontrol, P<sub>c</sub>: 5-20 bar, ports G 1/4</p>



**Table / Tablo 9**

Code / Kod	Ports-Threads / Girişler – Diş tipleri				
	P	A, B	T	N	C2
<b>M</b>	M22x1.5	M18x1.5	M22x1.5	M22x1.5	M22x1.5
<b>G</b>	G 1/2	G 3/8	G 1/2	G 1/2	G 1/2
<b>S</b>	7/8-14UNF	3/4-16UNF	7/8-14UNF	7/8-14UNF	7/8-14UNF

Types of Hand Control / Elle kontrol tipleri



**Table / Tablo 10**

Code / Kod	Feature / Özellik	Code / Kod	Feature / Özellik	Code / Kod	Feature / Özellik
<b>KZ</b>		<b>KY</b>		<b>KI</b>	
<b>KZ1</b>		<b>KY1</b>		<b>KI1</b>	
<b>KZ0</b>		<b>KY0</b>		<b>KI0</b>	
<b>KZ01</b>		<b>KY01</b>		<b>KI01</b>	
-	Without hand control / Elle kontrolsüz				

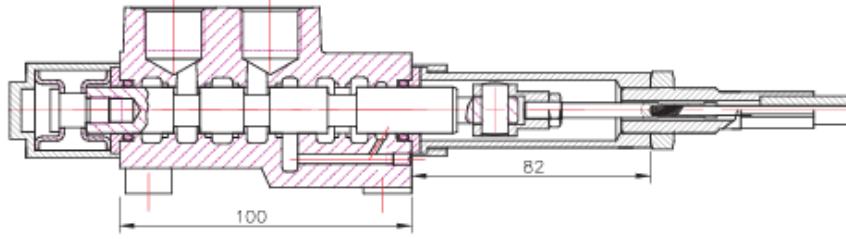
**Table / Tablo 11**

Code / Kod	Description	Diagram
<b>C</b>	Closed center / Kapalı merkez	
<b>C2</b>	Part for carry over / Carry over kısmı	
-	Without part for pressure carry over / Carry over kısmı olmadan	
<b>X</b>	Power beyond over to tank /	

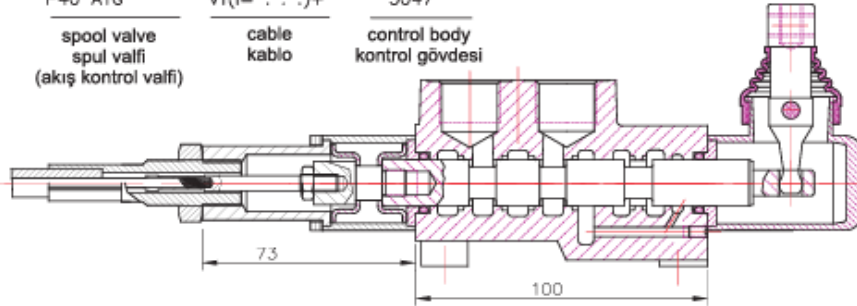
**Table / Tablo 12**

Code / Kod	Used connection ports / Kullanılan bağlantı girişleri
<b>11</b>	P1, T1
<b>12</b>	P1, T2
<b>21</b>	P2, T1
<b>22</b>	P2, T2

**REMOTE CONTROLS / UZAKTAN KONTROLLER**



P40 A1G      V1(= . . .)+      3047  
spool valve      cable      control body  
spul valfi      kablo      kontrol gövdesi  
(akış kontrol valfi)

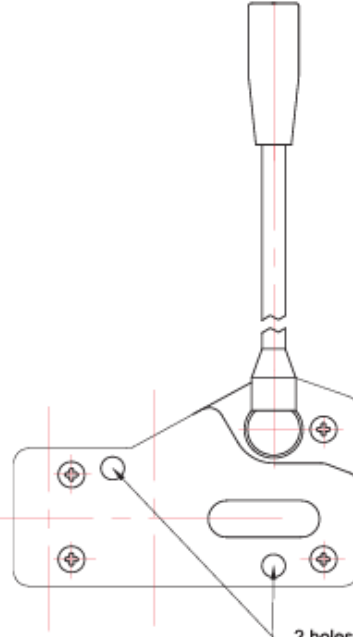


P40 A1G      V2KZ1(= . . .)+      3047  
spool valve      cable      control body  
spul valfi      kablo      kontrol gövdesi  
(akış kontrol valdi)

Technical specifications / Teknik Özellikler			
	3047	3076	3077
Stroke / Strok	13+13 mm	13+13 mm	13+13 mm
Max. load / Mak. yükleme	45 kg	45 kg	45 kg
Level ratio / Düzey oranı	10:1	10:1	10:1
Lock in neutral/Serbest konumda kilidi	No	No	Yes
Antireverse lock / Emniyet kilidi	No	Yes	No
Body colour / Gövde rengi	Black	Black	Black
Cables type / Kablo tipi	Heavy Duty	Heavy Duty	Heavy Duty
Operating temperature / Kullanım ısısı	-40/+80C	-40/+80C	-40/+80C

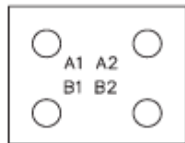
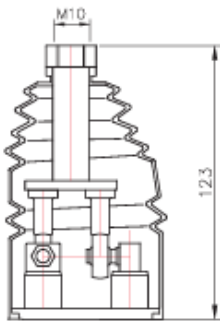
High solidity controls for easy mounting on every type of distributor.  
They can bymounted stand alone or packed together.  
They use push-pull heavy duty cables that provide a positive smooth  
operating lever and are manufactured in a three differents models to meet  
different needs of Clients.

Bütün kumanda kolları kolay monte edilir ve dayanıklı bir yapıya sahiptir.  
Montajlanmış veya demonte olarak gönderilebilir. Yüksek kalitede uzatma  
kabloları ile müşterilerin ihtiyaçları doğrultusunda uzaktan yönlendirme  
olanağı sağlar.

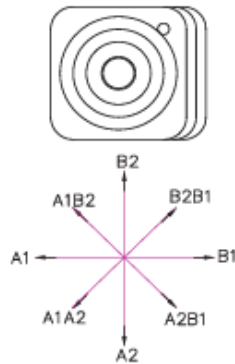


2 holes to mounting  
stackable  
birleştirme delikleri

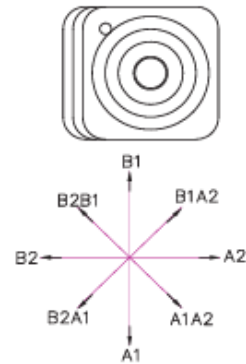
**JOYSTICK“+”**  
his control gives the possibility to operate, at the same time two spool with a “+” movement  
Bu kontrol sistemi aynı zamanda 2 tane sürgüyü kontrol edebilmemizi sağlar.



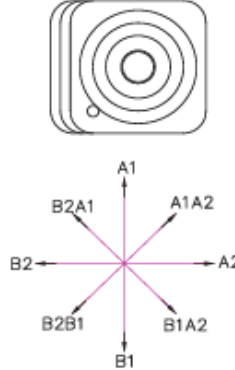
standart versiyon 1  
standard version 1



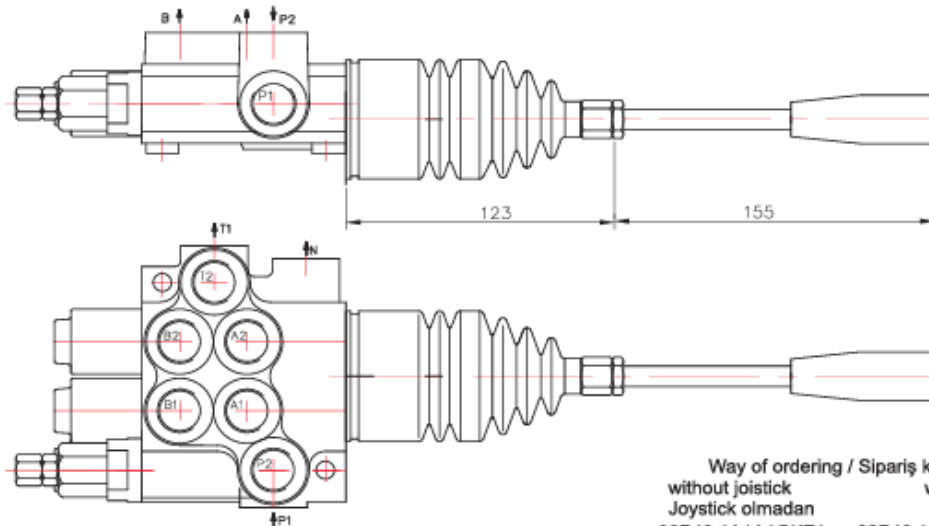
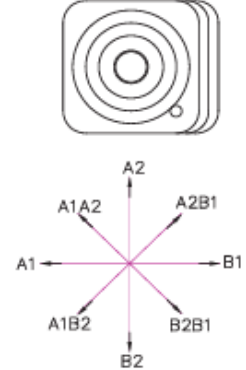
standart versiyon 2  
standard version 2



standart versiyon 3  
standard version 3



standart versiyon 4  
standard version 4



Way of ordering / Sipariş kodları  
without joystick / Joystick olmadan: 02P40 1A1A1GKZ1  
with joystick / Joystick ile: 02P40 1(A1A1)(js+3)G